



Novel Technologies for Biomedical Applications

SUMMARY:

- 1) Techfab presentation
- 2) 3 examples on our way of operating
- 3) What we are looking for and what we are interested in



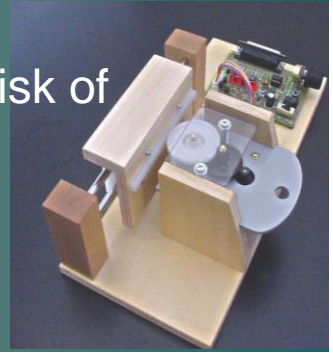
techfab
MICRO & NANO TECHNOLOGIES
COMPETENCE CENTER & FABRICATION FACILITY



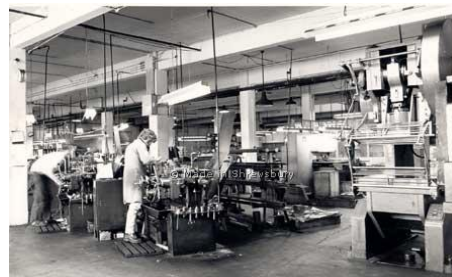
A FABRICATION FACILITY to support Enterprises and Research Centers engaged in industrial implementation of micro and nano technologies



Sometimes the brilliant results of the feasibility studies run the risk of becoming mere gadgets adorning the display cabinets of the research centres or take too long time to be exploited.



TECHFAB mission is to accompany and **support enterprises and research centres** engaged in processes of innovation and technology transfer **in the field of micro and nano technologies**, with particular focus on **production and industrialisation procedures**.



Medtech Partnering Day – Innsbruck 24 November 2009



TECHNOLOGICAL AND INDUSTRIAL FACILITIES

- Located at the Chivasso main exit of the Milano Torino Highway
- 20 Km from Torino Caselle Airport, 90 KM from Milano Malpensa
- Built on a 6000 sqm area (- - - -)
- 1800 sqm for offices, labs and industrial logistics
- 500 sqms of Clean Rooms up to class 100
- Class 1 Glove boxes
- Additional 5000 sqm for hosting industrial partners (- - - -)





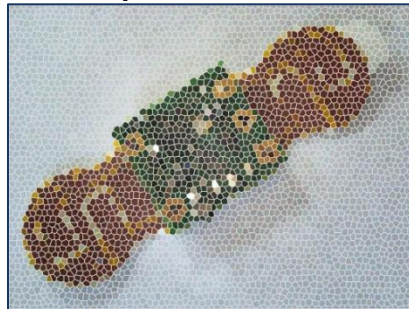
From customer's idea



Through Techfab's
competences and
facilities



To a commercial product



BBC Low graphics Help Search

NEWS [Watch](#) ONE-MINUTE WORLD NEWS

Page last updated at 08:23 GMT, Tuesday, 17 November 2009

[E-mail this to a friend](#) [Printable version](#)

Medical debut for smart band aid

Clinical trials have begun of a smart plaster - a sensor-studded band aid that wirelessly monitors vital signs.

Once stuck to a patient's chest, the band aid monitors heart rate, blood pressure and other health indicators.

Its creators hope it will eventually take over from the wired devices that limit a patient's movement.

As well as monitoring standard vital signs, the gadget can be tuned to capture far more subtle indicators of a patient's condition.

News Front Page

- Africa
- Americas
- Asia-Pacific
- Europe
- Middle East
- South Asia
- UK
- Business
- Health
- Science & Environment
- Technology**
- Entertainment
- Also in the news

Video and Audio

The smart plaster could be used to monitor patients from afar

We did it!

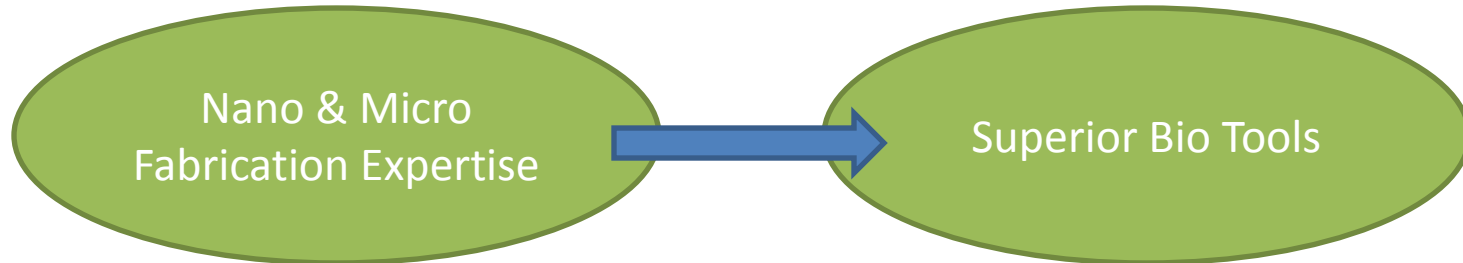
- ▲ Wireless
- ▲ Disposable
- ▲ Not invasive

Medtech Partnering Day – Innsbruck 24 November 2009



From our own ideas

To novel spin-off companies



Leading Edge Expertise:

- Physics
- Nano technology
- Electrical engineering
- Software & hardware
- Biology

Tools for Biology Researchers:

- Simulates real world anatomy
- Faster experiment results
- Cheaper process for labs
- Better process for exact results
- Integrated with modern microscopes

Medtech Partnering Day – Innsbruck 24 November 2009



Example: what BioTOOLSET does

Using BioTOOLSET

- Plastic chamber with artificial endothelial tissue
- Grown on micro-porous membrane
- Allows researchers to observe cell behaviour
- Saves time, cost and produces consistent results



Simulating the Human Body:

- Simulating the human cardio circulatory system
- Providing scientists and researchers with tools to observe & study
- Saving money & time





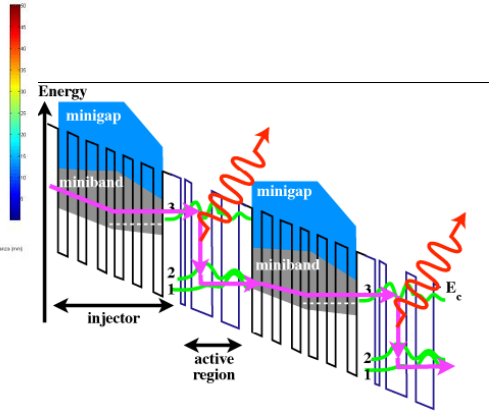
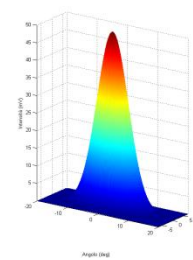
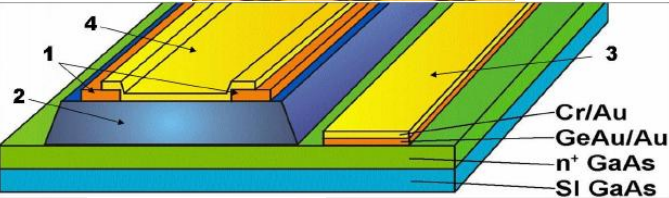
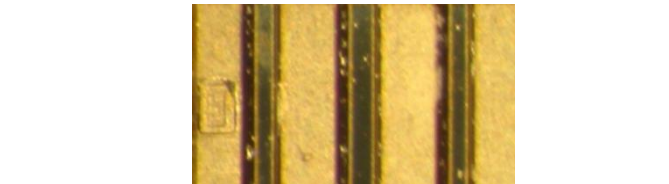
**Joint R&D activities with customers/partners
for future innovative products**



techfab
MICRO & NANO TECHNOLOGIES
COMPETENCE CENTER & FABRICATION FACILITY

From QCL

To innovative THz systems for skin cancer diagnosis



THz-imaging systems from LOT-ORIEL
TPS ima3000 & 2000



What we are looking for and what we are interested in:

- ▲ Customers
- ▲ Partners
- ▲ European research projects

Thanks for your kind attention



Techfab srl

Via Torino, 50

10015 Ivrea (TO)

Phone: +39 011 53.67.100

www.techfabmnt.it

Contacts: Ing. Giovanni Ciardiello
giovanni.ciardiello@techfabmnt.it
Dott. Diego Bruno
diego.bruno@techfabmnt.it