

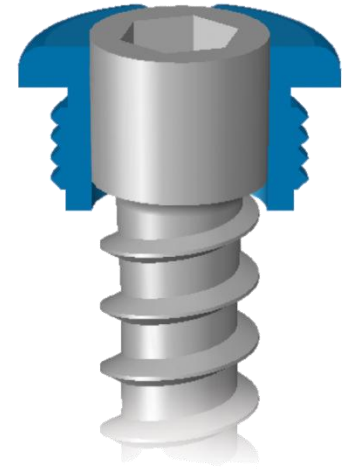


intrauma

Intrauma designs, manufactures and distributes a range of innovative internal fixation devices.

Formed in 2006, with 14 employees, the company is based in Rivoli, near Turin in Piedmont Region, Italy.

Second largest supplier of internal fixation devices in Italy.





TraumaVet

Traumavet designs, manufactures and distributes internal fixators for Veterinary applications.

Formed in 2007, with 3 employees, the company is based in Piedmont Region, Italy.

Cooperation with important veterinary surgeons.





RUNNING PROJECTS

1) NANOPRO : Regional Project started in 2007

- develop bioceramic prostheses able of better performances with respect to the traditional ones;
- tests on goat knees - End of the project in 2010.

2) ROBOMAN: Piedmont Region industrial research 2008

- Robot Manipulator for the reduction of decomposed pelvic and femur fractures;
- AIM: help the surgeon to reduce fractures using an aptic interface; Robot will mantain the fractured bones reduced as the surgeon wants.



PROJECT IDEA / 1

FiDiS : Sensorized Dynamic Internal Fixator (F.E.S.R. 2007/2013)

Internal fixator that can be:

- Dynamized,
- Sensorized,

in order to:

**monitor the fracture consolidation
the patient's healing process.**





PROJECT IDEA / 2

PEDIS: Probe Endomedullary Distal Interlocking System

Development of a diagnostic device that:

- informs the surgeon of the tensions the endomedullary nail is subject to in femur fractures ;
- provides a guide for the fixation of distal screws.





PROJECT IDEA / 3

NEW GENERATION BONE SUBSTITUTES

Synthetic osteoconductive scaffolds to help bone regrowth, enriched with **bioglasses** and/or with **drug delivery particles** for faster bone regrowth



Osteoinductive scaffolds



SEARCHED PARTNERS

Companies / organizations that can cooperate in similar or new project ideas aimed to develop new medical devices / instrumentation for Trauma applications.

Searching for competences in:

- **Implantable devices (from new internal fixators to bone substitutes);**
- **Software-hardware Development for the integration in trauma applications;**

Companies to cooperate with for developing a common commercial network (mutual distributorship...).